



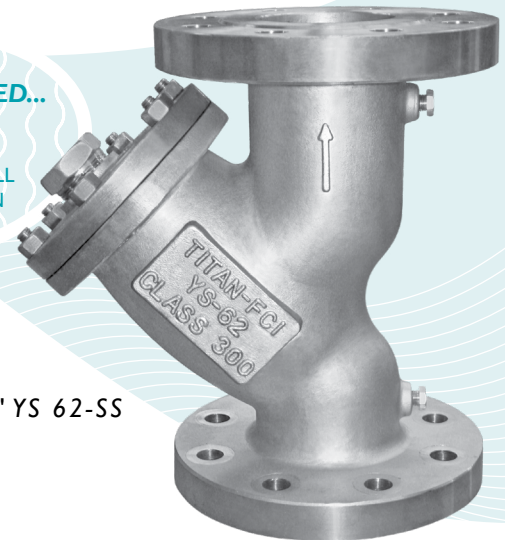
TITAN FLOW CONTROL, INC.

## "Y" (WYE) STRAINER ♦ FLANGED ENDS, RAISED FACE

### ASME CLASS 300 ♦ CARBON AND STAINLESS STEEL

#### NEWLY DESIGNED... Gauge Taps

STANDARD ON ALL  
YS 62 MODELS IN  
SIZES 2" ~ 12"



6" YS 62-SS

## MODELS: YS 62-CS

(CARBON STEEL)

## YS 62-SS

(STAINLESS STEEL)

## FEATURES

SIZE RANGE: 1/2" ~ 16"

- ◇ **NEW DESIGN WITH GAUGE TAPS**  
TITAN'S YS62 HAS CONVENIENT GAUGE TAPS FURNISHED WITH A PLUG ON BOTH THE INLET AND OUTLET SIDES OF SIZES 2" THROUGH 16". THESE TAPS ALLOW FOR EASY INSTALLATION OF PRESSURE GAUGES TO MONITOR DIFFERENTIAL PRESSURE AND DETERMINE WHEN SCREEN CLEANING IS NECESSARY.
- ◇ **LARGE STRAINING CAPACITY**  
WITH ITS LARGE BODY AND SIZABLE STRAINING ELEMENT, THE YS62 PROVIDES EXCELLENT OPEN AREA RATIOS THAT ARE TYPICALLY TWO-AND-A-HALF TIMES LARGER THAN THE CORRESPONDING PIPELINE.
- ◇ **PRECISION MACHINED SEATS**  
PRECISION MACHINED SCREEN SEATS IN BOTH THE BODY AND CAP HELP TO ENSURE ACCURATE POSITIONING OF THE SCREEN DURING REASSEMBLY AFTER CLEANING. ALSO, THE MACHINED BODY SEATS ENABLE FINER FILTRATION BY PREVENTING DEBRIS BYPASS.
- ◇ **SELF-CLEANING CAPABILITY**  
WITH A TAPPED NPT BLOW-OFF CONNECTION, THIS UNIT CAN BE FITTED WITH A BLOW-DOWN VALVE WHICH FACILITATES CLEANING OF THE STRAINING ELEMENT. PLEASE CONTACT FACTORY FOR MORE INFORMATION.
- ◇ **EPOXY PAINTED**  
CARBON STEEL UNITS ARE EPOXY PAINTED TO HELP RESIST RUST AND CORROSION. TITAN FCI ALSO OFFERS EPOXY COATING AS AN OPTION FOR THE YS62.
- ◇ **OPTIONAL COVER DESIGNS**  
TITAN'S YS62 IS AVAILABLE WITH DIFFERENT COVER OPTIONS INCLUDING SWING, CLAMP, AND HINGE TYPE COVERS. PLEASE CONSULT FACTORY FOR MORE INFORMATION ON THESE OPTIONS.

## TECHNICAL

PRESSURE/TEMPERATURE RATING  
CS - ASTM A216 GR. WCB - CLASS 300

WOG (Non-shock): 740 PSI @ 100 °F

PRESSURE/TEMPERATURE RATING  
SS - ASTM A351 GR. CF8M - CLASS 300

WOG (Non-shock): 720 PSI @ 100 °F

- The above listed temperatures are theoretical and may vary during actual operating conditions.
- Carbon Steel not recommended for prolonged use above 800 °F.
- Stainless Steel not recommended for prolonged use above 1000 °F.

## APPLICATIONS

**CARBON STEEL PROPERTIES:** CARBON STEEL PERFORMS EXCEPTIONALLY WELL IN HIGH TEMPERATURES, UP TO 800°F IN CONTINUOUS SERVICE. IT PROVIDES HIGH RESISTANCE TO SHOCK, VIBRATION, PIPING STRAINS, AND FIRE AND FREEZING HAZARDS. CARBON STEEL STRAINERS ARE OFTEN USED IN THE OIL AND PETROCHEMICAL INDUSTRIES.

**STAINLESS STEEL PROPERTIES:** STAINLESS STEEL IS COMMONLY SPECIFIED FOR HIGH TEMPERATURE SERVICE, UP TO 1000°F IN CONTINUOUS SERVICE. STAINLESS STEEL STRAINERS ARE COMMONLY FOUND IN THE CHEMICAL, FOOD, AND PHARMACEUTICAL INDUSTRIES.

*The above data represents common market and service applications. No representation or guarantee, expressed or implied, is given due to the numerous variations of concentrations, temperatures and flow conditions that may occur during actual service.*

**TITAN FLOW CONTROL, INC.**  
**YOUR PIPELINE TO THE FUTURE!**

Tel: 910-735-0000 ♦ Fax: 910-738-3848 ♦ titan@titanfci.com ♦ www.titanfci.com  
290 Corporate Drive ♦ PO Box 7408 ♦ Lumberton, NC 28358



**TITAN FLOW CONTROL, Inc.**

290 Corporate Drive  
Lumberton, NC 28358  
Tel: 910.735.0000

E-mail: titan@titanfci.com  
Web: www.titanfci.com  
Fax: 910.738.3848

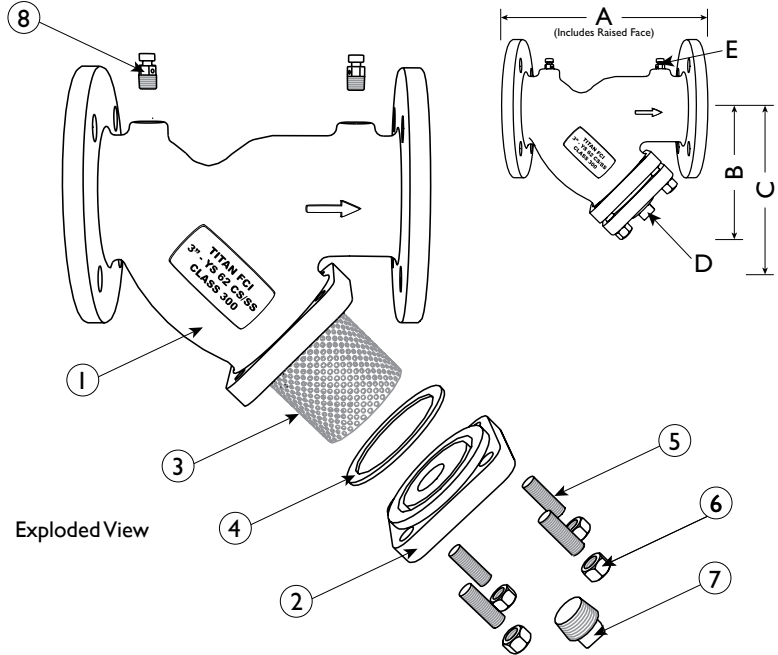
**WYE STRAINER**  
**YS 62-CS - (Carbon Steel)**  
**YS 62-SS - (Stainless Steel)**

ASME Class  
300

Flanged Ends • Raised Face • Carbon & Stainless Steel

**BILL OF MATERIALS (1)**

| No. | PART                       | YS 62-CS (5)                    | YS 62-SS                         |
|-----|----------------------------|---------------------------------|----------------------------------|
| 1   | Body (2)                   | Carbon Steel<br>A216 Gr. WCB    | Stainless Steel<br>A351 Gr. CF8M |
| 2   | Cover                      | Carbon Steel<br>A216 Gr. WCB    | Stainless Steel<br>A351 Gr. CF8M |
| 3   | Straining Element (3)      | Stainless Steel                 | Stainless Steel                  |
| 4   | Gasket (3)                 | Stainless Steel<br>Spiral Wound | Stainless Steel<br>Spiral Wound  |
| 5   | Studs                      | Alloy Steel                     | Stainless Steel                  |
| 6   | Nuts                       | Carbon Steel                    | Stainless Steel                  |
| 7   | NPT Plug<br>Blow-off       | Carbon Steel                    | Stainless Steel                  |
| 8   | NPT Plug<br>Gauge Taps (4) | Carbon Steel                    | Stainless Steel                  |



Exploded View

Illustrations are representative of sizes 2" through 12" only. Please ask for certified drawings when required.

- Bill of Materials represents standard materials. Equivalent or better materials may be substituted at the manufacturer's discretion.
- Available in additional body materials, such as LCB, WC6, WC9, 316L, Alloy 20, and Monel.
- Denotes recommended spare parts.
- Part number 8 (NPT Plug - Gauge Taps) only applies to sizes 2" through 16".
- Carbon Steel bodies are epoxy painted.

**DIMENSIONS AND PERFORMANCE DATA (1)**

| SIZE  | in             | 1/2  | 3/4  | 1    | 1 1/4 | 1 1/2 | 2    | 2 1/2 | 3     | 4     | 5     | 6     | 8     | 10    | 12    | 14    | 16    |
|---|----------------|------|------|------|-------|-------|------|-------|-------|-------|-------|-------|-------|-------|-------|-------|-------|
|   | mm             | 15   | 20   | 25   | 32    | 40    | 50   | 65    | 80    | 100   | 125   | 150   | 200   | 250   | 300   | 350   | 400   |
| <b>A DIMENSION</b><br>FACE TO FACE (2)      | in             | 6.62 | 8.31 | 8.31 | 10.12 | 10.25 | 9.62 | 10.62 | 12.00 | 14.50 | 19.31 | 19.31 | 23.37 | 27.37 | 32.00 | 37.50 | 43.38 |
|   | mm             | 169  | 212  | 212  | 258   | 261   | 245  | 270   | 305   | 369   | 491   | 491   | 594   | 696   | 813   | 953   | 1102  |
| <b>B DIMENSION</b><br>CENTER LINE TO BOTTOM | in             | 3.50 | 3.75 | 3.75 | 5.50  | 5.50  | 5.25 | 6.50  | 7.00  | 8.25  | 11.25 | 13.50 | 15.50 | 18.50 | 21.75 | 25.00 | 30.00 |
|   | mm             | 89   | 96   | 96   | 140   | 140   | 134  | 166   | 178   | 210   | 286   | 343   | 394   | 470   | 553   | 635   | 762   |
| <b>C DIMENSION</b><br>SCREEN REMOVAL        | in             | 5.00 | 5.00 | 5.00 | 8.00  | 8.00  | 7.00 | 9.75  | 10.00 | 12.00 | 17.00 | 20.00 | 22.75 | 28.00 | 30.00 | 36.50 | 43.00 |
|   | mm             | 127  | 127  | 127  | 204   | 204   | 178  | 248   | 254   | 305   | 432   | 508   | 578   | 712   | 762   | 927   | 1092  |
| <b>D NPT Plug</b><br>BLOW-OFF               | in             | 3/8  | 1/2  | 1/2  | 1/2   | 1/2   | 1/2  | 1     | 1     | 1 1/2 | 2     | 2     | 2     | 2     | 2     | 2     | 2     |
|   | mm             | 10   | 15   | 15   | 15    | 15    | 15   | 25    | 25    | 40    | 50    | 50    | 50    | 50    | 50    | 50    | 50    |
| <b>E NPT Plug</b><br>GAUGETAPS              | in             | N/A  | N/A  | N/A  | N/A   | N/A   | 1/4  | 1/4   | 1/4   | 1/4   | 1/4   | 1/4   | 1/4   | 1/4   | 1/4   | 1/4   | 1/4   |
|   | mm             | N/A  | N/A  | N/A  | N/A   | N/A   | 8    | 8     | 8     | 8     | 8     | 8     | 8     | 8     | 8     | 8     | 8     |
| ASSEMBLED WEIGHT<br>APPROXIMATE             | lb             | 7.5  | 10.0 | 13.5 | 26.0  | 25.0  | 26.0 | 40.0  | 52.5  | 94.0  | 161.5 | 185.5 | 260.0 | 408.0 | 632.0 | 1450  | 2000  |
|   | kg             | 3.4  | 4.5  | 6.1  | 11.8  | 11.3  | 11.8 | 18.1  | 23.8  | 42.6  | 73.2  | 84.1  | 117.9 | 185.1 | 286.7 | 658   | 907   |
| Flow Coefficient                            | C <sub>v</sub> | 8    | 15   | 22   | 30    | 42    | 70   | 110   | 160   | 260   | 400   | 570   | 950   | 1600  | 2200  | 3300  | 4900  |

- Dimensions and weights are for reference only. When required, request certified drawings.
- Face to face values have a tolerance of ±0.06 in (±2.0 mm) for sizes 10" and lower and a tolerance of ±0.12 in (±3.0 mm) for sizes 12" and larger.

**PRESSURE - TEMPERATURE RATING**

| Body Material    | A216 Gr. WCB     | A351 Gr. CF8M    |
|------------------|------------------|------------------|
| WOG (Non-shock): | 740 PSI @ 100 °F | 720 PSI @ 100 °F |

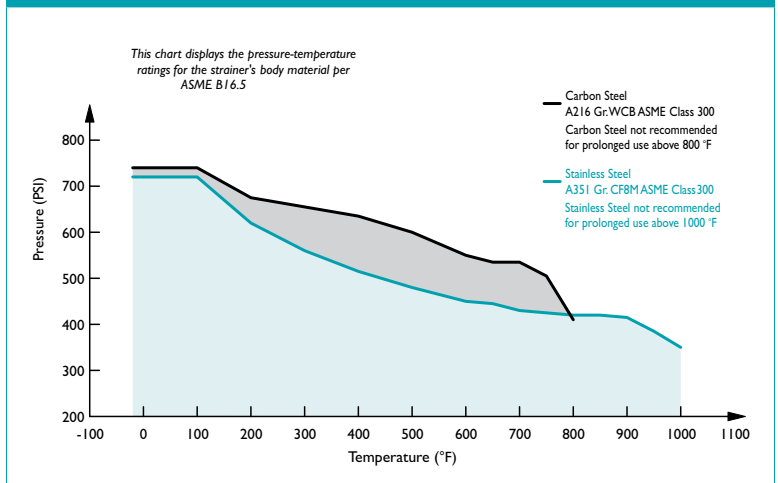
**SCREEN SELECTION GUIDELINES**

| Size      | Liquid       | Open Area | Steam         | Open Area |
|-----------|--------------|-----------|---------------|-----------|
| 1/2" - 4" | 1/16 (.0625) | 41%       | 1/32 (.033)   | 28%       |
| 5" - 8"   | 1/8 (.125)   | 40%       | 3/64 (.045)   | 36%       |
| 10" - 16" | 1/8 (.125)   | 40%       | 30 Mesh Lined | 44.8%     |

**REFERENCED STANDARDS & CODES**

| CODE        | DESCRIPTION                        |
|-------------|------------------------------------|
| ASME B16.5  | Pipe Flanges and Flanged Fittings  |
| ASME B16.34 | Flanged, Threaded, and Welding End |

**PRESSURE - TEMPERATURE RATINGS**



Titan FCI makes every effort to ensure the information presented on our literature accurately reflects exact product specifications. However, as product changes occur, there may be short-term differences between actual product specifications and the information contained within our literature. Titan FCI reserves the right to make design and specification changes to improve our products without prior notification. When required, request certified drawings.