



Triac TB Series Tank Bottom Valves are of 316SS construction and feature the Series 55 valve body. The 3-piece design allows for easy maintenance and assembly. The weld-in-place tank pad is designed to bolt directly to the valve's center body. It can be fitted with threaded, socket weld, butt weld or 150# flanged mating end.

These valves are easily automated and feature the same high quality live loaded stem sealing system of the Series 55.

VALVE SIZE	VALVE Cv
2"	400
3"	1100
4"	2000

Easy to Automate!

See automated data sheets for pre-sized assemblies



Pneumatic



Electric



TB Series Tank Bottom Valves

Sizes 2", 3", and 4"

316SS Body

ISO 5211 Mounting Pad

800 psi WOG

Full Port

HOW TO ORDER MANUAL VALVES

SAMPLE PART #

T5-F1-0300-XXX

Tank Bottom

Valve Series

150# Flanged End

Valve Size

Seat Material

Special Designation

Additional
Special Designation

See part number matrix for itemized options

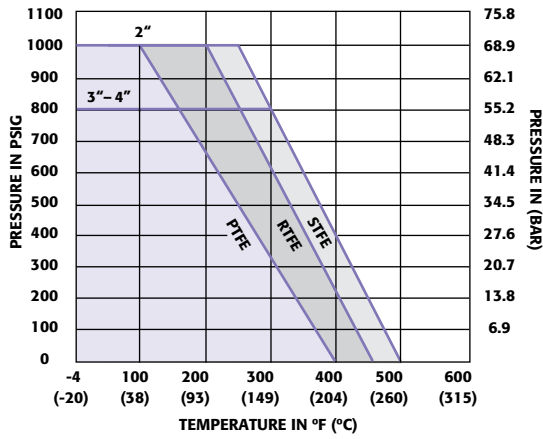


Triac Division
11363 Deerfield Rd.
Cincinnati, Ohio 45242

PHONE (513) 247-5465
FAX (513) 247-5462
e-mail: sales@a-tcontrols.com
www.a-tcontrols.com

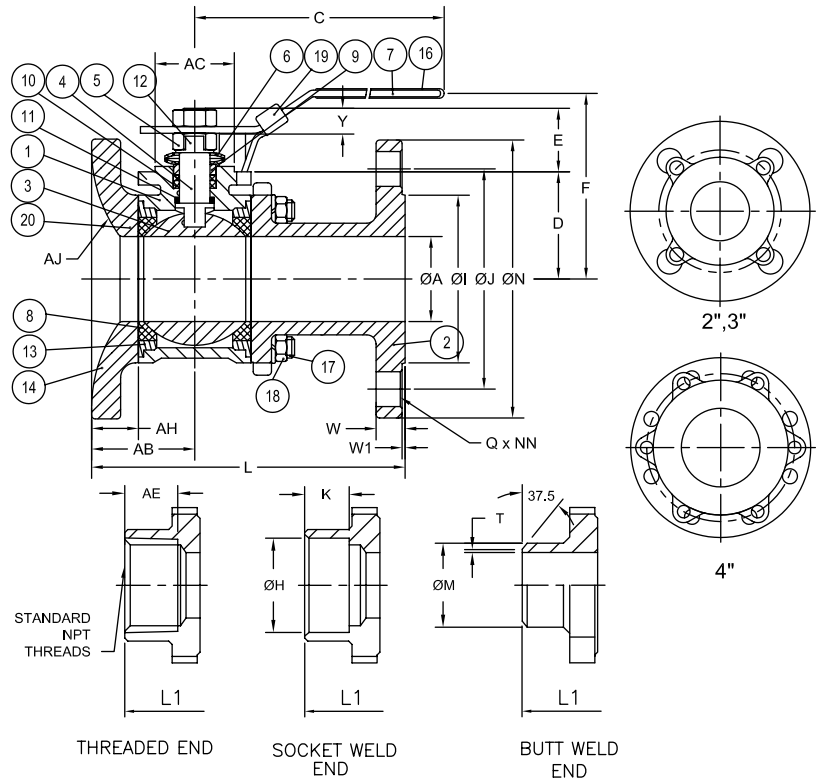
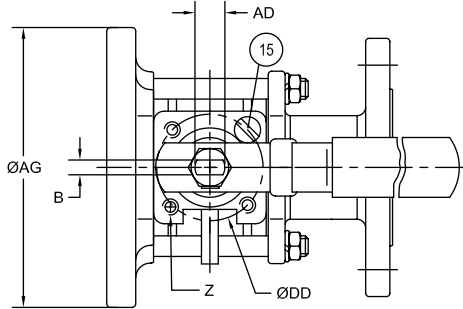
Series TB

Pressure vs. Temperature Chart



BREAKAWAY TORQUES RTFE SEATS	
SIZE	IN-LBS.
2"	319
3"	691
4"	1151

NOTE: For other seat material, consult factory



MATERIALS LIST

NO.	PART NAME	QTY.	MATERIAL
1	Body	1	CF8M
2	End Cap	1	CF8M
3	Ball	1	SS316
4	Stem	1	SS316
5	Stem Nut	1	SS304
6	Belleville Washer	2	SS301
7	Handle	1	SS304
8	Seat	2	RTFE
9	Gland Bush	1	SS304
10	Gland Packing	2	PTFE
11	Stem Seal	1	RTFE
12	Stop Washer	1	SS304
13	Joint Gasket	2	PTFE
14	Bolt	*	SS304
15	Stop Pin	1	SS304
16	Handle Sleeve	1	Vinyl
17	Bolt Nut	*	SS304
18	Washer	*	SS304
19	Locking Device	1	SS304
20	Tank	1	CF3M

* For 2" and 3" - 4 pcs.
For 4" - 6 pcs.

DIMENSIONS (IN.)

SIZE	A	B	C	D	E	F	H	I	J	K	L	L1	M	N	Q	T	W	W1
2"	1.97	0.382	7.28	2.15	1.22	4.33	2.41	3.62	4.75	0.63	6.48	4.86	2.38	6.00	0.75	0.06	0.63	0.06
3"	3.15	0.472	10.24	3.33	1.55	6.38	3.54	5.00	6.00	0.63	8.32	6.77	3.54	7.50	0.75	0.08	0.75	0.06
4"	3.94	0.591	11.42	4.19	2.06	7.48	4.55	6.19	7.50	0.79	10.65	8.44	4.57	9.00	0.75	0.14	0.94	0.06

SIZE	Y	Z	AB	AC	AD	AE	AG	AH	AJ	DD	NN	(LBS)	#(LBS)	ISO5211
2"	0.539	M6	2.28	1.38	0.551	0.86	6.00	1.00	2.95	1.969	4	10.5	15.0	F05
3"	0.736	M10	3.17	2.76	0.748	1.23	10.00	1.22	6.50	4.016	4	34.5	42.0	F10
4"	1.165	M10	3.80	2.76	0.748	1.42	11.38	1.30	7.68	4.016	8	57.0	70.0	F10

#(LBS.) IS FOR TANK BOTTOM x FLANGED END WEIGHTS